

ALPHA^{acoustic}-CL.CR

SPECIAL ACOUSTIC FABRIC

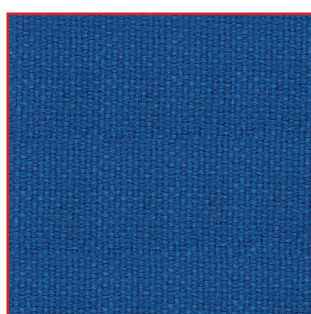
DESCRIPTION

The special sound transparent fabric **ALPHA^{acoustic} CL** is used for external covering of the acoustic panels and the Bass Traps. Due to their increased sound transmissibility, the sound absorption capabilities of the internal material are not affected

TECHNICAL CHARACTERISTICS

Composition	100% Polyolefin
Weight	220g/m ² +_ 5% (375g/lin.m. +-5%)
Width	170cm +_ 2% Usable
Abrasion Resistance	Grade A tested in accordance with EN 14465:2003 with a 5 year guarantee of wearability (full details available)
Flammability	BS 476 Part 7 Class 1, BS EN 1021 - 1:2006 (cigarette) Note: Flammability performance is dependent on components used.
Maintenance	Vacuum regularly. Wipe clean with a damp cloth or shampoo using proprietary upholstery shampoo.
Colour Matching	Batch to batch variations in shade may occur with commercial tolerances.

COLOR CODES



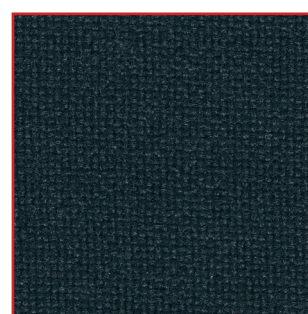
Adriatic EJ154



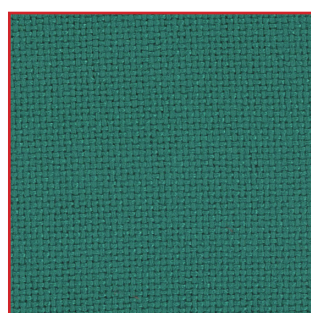
Austen EJ173



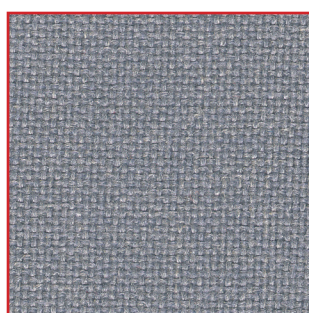
Beltane EJ193



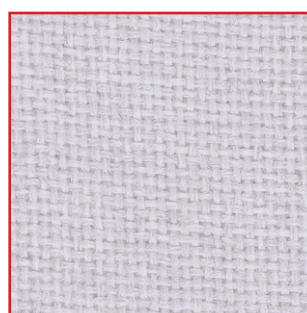
Black EJ138



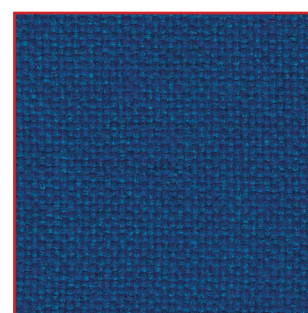
Carron EJ015



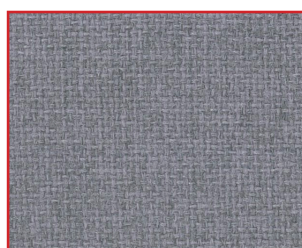
Chaucer EJ172



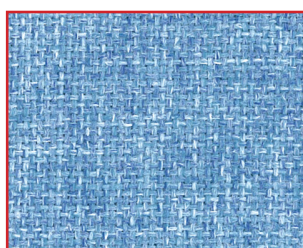
Clan EJ169



Cluanie EJ180



Denny EJ196



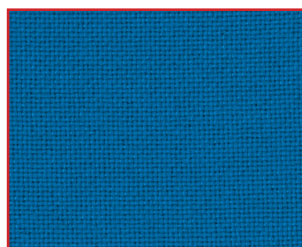
Dolphin EJ105



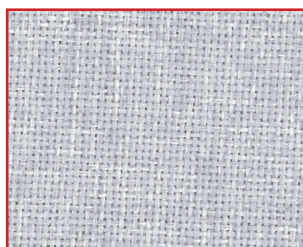
Easdale EJ188



Fair Isle EJ186



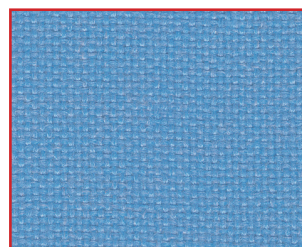
Galilee EJ125



Glass EJ004



Hillswick EJ190



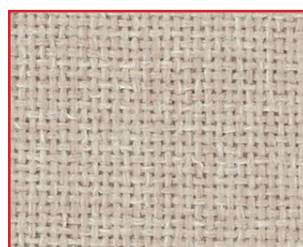
Inverness EJ175



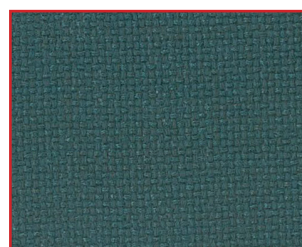
Lead EJ104



Lerwick EJ194



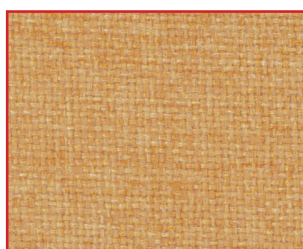
Lomond EJ192



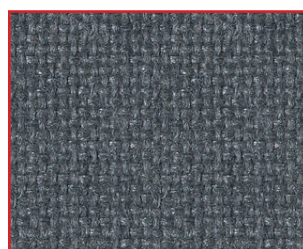
Lora EJ187



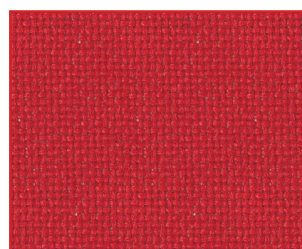
Lossie EJ197



Maree EJ195



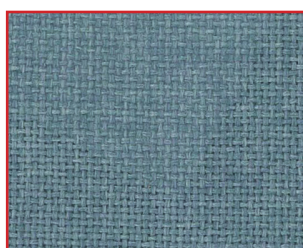
Merrick EJ048



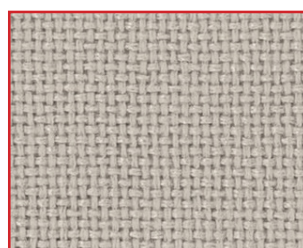
Pitlochry EJ076



Portland EJ016



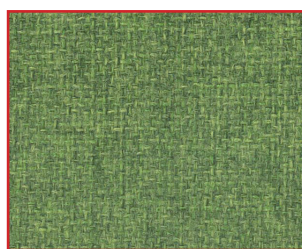
Ronay EJ189



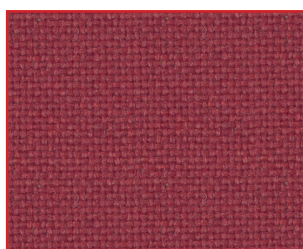
Shetland EJ191



Spray EJ033



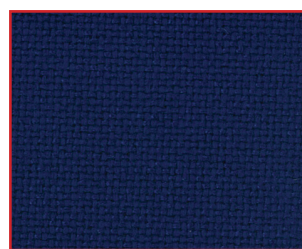
Staffa EJ185.jpg



Tummel EJ038



Vit EJ184



Walten EJ011

Design and Production according to Quality Management System **ISO 9001.2008** & Environmental Management System **ISO 14001.2004**